



**GALVANISED  
STEEL**

## Tank Vent Check Valves Type **BOLERO**

**BOLERO with PN10 flange - DN 40-250 / DN 300-350**

### Standard type

- /// Galvanised steel (thickness according IACS rules)
- /// PE Float ball
- /// Flange acc. DIN 2576 PN10
- /// Airflow Velocity: max. 4 m/s
- /// Screen

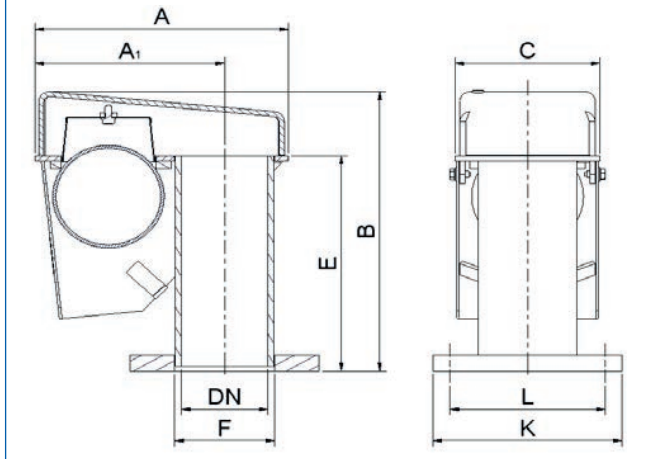
### Options

- /// No Screen
- /// Other Flange Connection

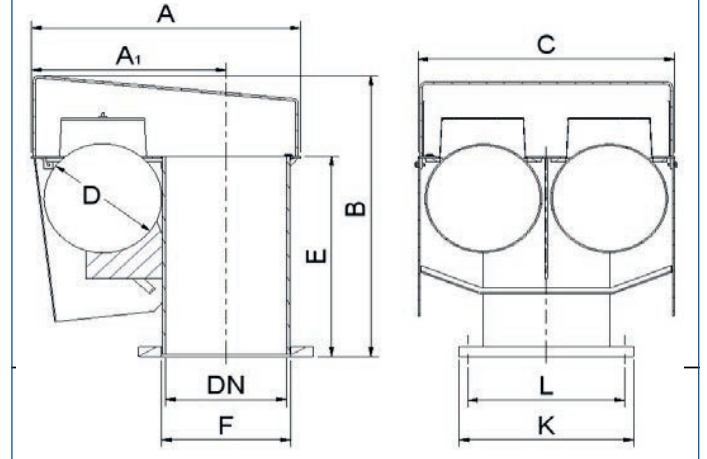
## Product specification



**BOLERO PN10 - DN 40-250**



**BOLERO PN10 - DN 300-350**



### BOLERO PN10 - DN 40-250

DN	40	50	65	80	100	125	150	175	200	250
A	186	186	218	259	294	344	404	544	544	669
A <sub>1</sub>	135	134.5	162	184.5	220	256	302	411	411	505
B	227	227	254	285	352	407	452	672	672	772
C	118	118	133	148	168	193	218	275	275	338
D	70	70	85	100	130	155	185	240	240	300
E	171	171	186	216	271	301	321	471	471	551
F (∅)	48.3	60.3	76.1	88.9	114.3	139.7	168.3	193.7	219.1	273
K (∅)	150	165	185	200	220	250	285	315	340	395
L Stc. (∅)	110	125	145	160	180	210	240	270	295	350
L boltholes	4 / ∅18	4 / ∅18	4 / ∅18	8 / ∅18	8 / ∅18	8 / ∅18	8 / ∅22	8 / ∅22	8 / ∅22	12 / ∅22
										(all sizes in mm)
Weight in kg	7	8	10	13	18	26	35	61	64	92

### BOLERO PN10 - DN 300-350

DN	300	350
A	684	775
A <sub>1</sub>	495	561
B	772	822
C	653	703
D	300	325
E	551	601
F (∅)	320	368
K (∅)	445	505
L Stc. (∅)	400	460
L boltholes	12 / ∅22	16 / ∅22
		(all sizes in mm)
Weight in kg	132	155