

## Description

Self closing valve used in water or fuel systems where the valves are opened with the lever and closed automatically by the spring. Can be locked in closed position by the handwheel. Metal sealing.

## Specifications

Flange standard:	ISO 7005-2, ASME B16.42
Face to face standard:	ISO 5752, basic series 1
Bonnet connection:	Bolted
Execution:	Straight
Connection type:	Flanged
Operation:	Handwheel, Selfclosing
Actuation:	Multiturn



## Media

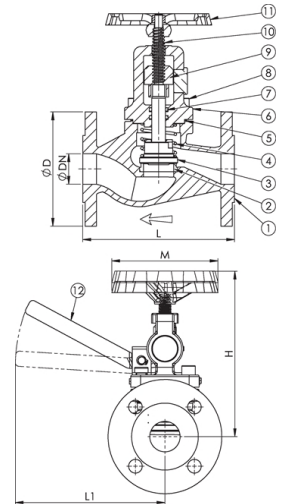
Thermal oil. Fuel oil, lubricating oil and flammable hydraulic oil. Cargo oil. Non-flammable hydraulic fluid. Boiler feedwater, condensate. Seawater and freshwater.

## Material

No.	Part	Material
1	Body	Ductile iron EN-JS1030 (GGG40)
2	Seat ring	Stainless steel 1.4301 (AISI304)
3	Disc	Stainless steel 1.4301 (AISI304)
4	Spring	Spring steel SH (1084 ASTM A713)
5	Gasket	NBR bonded aramid
6	Bonnet	Ductile iron EN-JS1030 (GGG40)
7	O-ring	FPM/FKM
8	Screw	8.8 FZB
9	Setting nut	Brass CW617N (Ms58)
10	Stem	Stainless steel 1.4301 (AISI304)
11	Handwheel	Cast iron EN-JL1040 (GG25)
12	Lever	Stainless steel 1.4301 (AISI304)

### Max. working pressure (bar) at °C

DN	Connection	up to 120°C	180°C
15 - 80	PN 16	16	10
15 - 80	ANSI 150	16	10



### DIN

DN	Item no.	Pressure rating	Connection	L	D	L1	H	M	Weight (kg)	Color
15	75662	PN 16	PN 16	130	95	166	185	120	4.2	Red RAL 3011
20	75663	PN 16	PN 16	150	105	166	185	120	4.7	Red RAL 3011
25	75664	PN 16	PN 16	160	115	168	195	120	5.6	Red RAL 3011
32	75665	PN 16	PN 16	180	140	168	194	120	7.1	Red RAL 3011
40	75666	PN 16	PN 16	200	150	201	217	140	10.0	Red RAL 3011
50	75667	PN 16	PN 16	230	165	204	217	140	12.0	Red RAL 3011
65	75668	PN 16	PN 16	290	185	278	254	140	17.0	Red RAL 3011
80	75669	PN 16	PN 16	310	200	285	259	160	24.0	Red RAL 3011

All measurements in mm. Weights are approximations.

### Flanges drilled ANSI

DN	Item no.	Pressure rating	Connection	L	D	L1	H	M	Weight (kg)	Color
15	93197	PN 16	ANSI 150	130	95	166	185	120	4.2	Red RAL 3011
20	75913	PN 16	ANSI 150	150	105	166	185	120	4.7	Red RAL 3011
25	75837	PN 16	ANSI 150	160	115	168	195	120	5.6	Red RAL 3011
32	93198	PN 16	ANSI 150	180	140	168	194	120	7.1	Red RAL 3011
40	92749	PN 16	ANSI 150	200	150	201	217	140	10.0	Red RAL 3011

All measurements in mm. Weights are approximations.



## Flanges drilled ANSI

DN	Item no.	Pressure rating	Connection	L	D	L1	H	M	Weight (kg)	Color
50	75840	PN 16	ANSI 150	230	165	204	217	140	12.0	Red RAL 3011
65	75841	PN 16	ANSI 150	290	185	278	254	140	17.0	Red RAL 3011
80	92751	PN 16	ANSI 150	310	200	285	259	160	24.0	Red RAL 3011

All measurements in mm. Weights are approximations.

