

Description

Diaphragm valve is often used for freshwater, seawater and compressed air applications. Multiturn operation. Round handwheel only for DN 50 and larger sizes, smaller sizes delivered with grab handle. Flange connection.

Specifications

Flange standard:	ISO 7005-2
Face to face standard:	EN 558, series 1
Bonnet connection:	Bolted
Execution:	Straight
Connection type:	Flanged
Operation:	Handwheel
Actuation:	Multiturn



Media

Corrosive fluids. Fuel oil, lubricating oil and flammable hydraulic oil. Cargo oil. Air. Gas. Non-flammable hydraulic fluid. Seawater and freshwater.

Variants

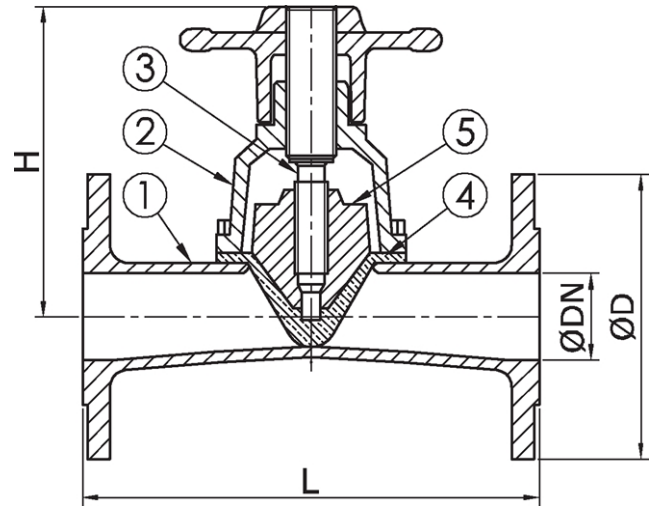
Other materials, coatings and linings on request.

Material

No.	Part	Material
1	Body	Cast iron EN-JL1040 (GG25)
2	Bonnet	Cast iron EN-JL1040 (GG25)
3	Stem	Stainless steel 1.4301 (AISI304)
4	Diaphragm	NBR
5	Disc	Cast iron EN-JL1040 (GG25)

Max. working pressure (bar) at °C

DN	Connection	-10°C to +50°C
50 - 100	PN 10	10
125 - 150	PN 10	6
200	PN 10	3.5



Items

DN	Item no.	Pressure rating	Connection	L	D	H	Weight (kg)
50	41561	PN 10	PN 10	230	165	194	10.0
65	41562	PN 10	PN 10	290	185	270	16.0
80	41563	PN 10	PN 10	310	200	270	27.0
100	41564	PN 10	PN 10	350	220	300	34.0
125	41565	PN 6	PN 10	400	250	420	52.0
150	41566	PN 6	PN 10	480	285	420	69.0
200	41567	PN 3.5	PN 10	600	340	453	136.0

All measurements in mm. Weights are approximations.

