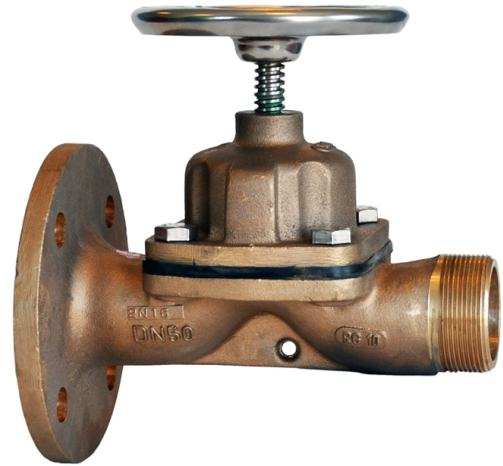


Description

Diaphragm valve is often used for freshwater, seawater and compressed air applications. Multiturn operation. Flange mounted valve with male threaded connection for fire fighting and deck washing.

Specifications

Bonnet connection:	Bolted
Execution:	Weir
Connection type:	Flanged, Threaded male
Operation:	Handwheel
Actuation:	Multiturn



Application

For fire fighting systems.

Media

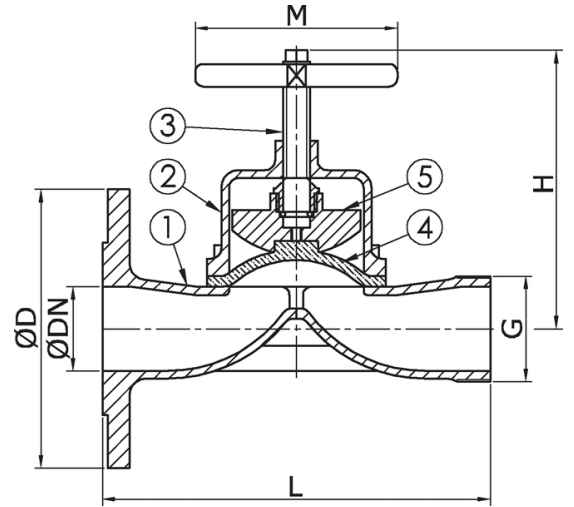
Seawater and freshwater.

Material

No.	Part	Material
1	Body	Bronze CC491K (RG5)
2	Bonnet	Bronze CC491K (RG5)
3	Stem	Special brass CW710R (SoMs59)
4	Diaphragm	EPDM
5	Disc	Bronze CC491K (RG5)

Max. working pressure (bar) at °C

DN	-10°C to +120°C
50 - 65	10



Items

DN	Item no.	Pressure rating	L	G (BSP)	D	H	M	Weight (kg)	Color
50	92652	PN 10	228	G 2"	165	183	140	10.0	Unpainted
65	41152	PN 10	285	G 2 1/2"	185	200	140	15.0	Unpainted

All measurements in mm. Weights are approximations.

