

## Description

Fire valve used in fresh water and sea water systems for multiturn operation, to be fitted with fire coupling for connecting fire hose. Angled type with bolted bonnet. Soft disc sealing.

## Specifications

Flange standard:	EN 1092-3
Bonnet connection:	Bolted
Execution:	Angled
Connection type:	Flanged, Threaded male
Operation:	Handwheel
Actuation:	Multiturn



## Application

For fire fighting systems. Max. temperature 80°C.

## Media

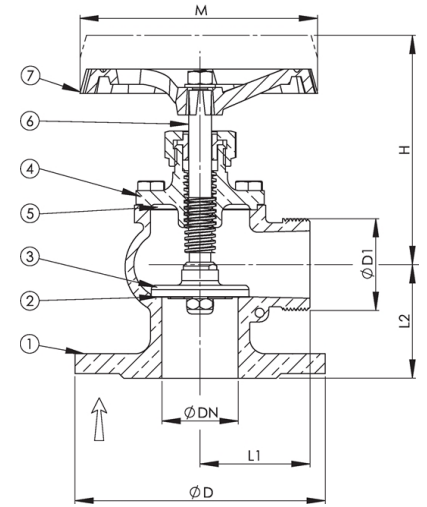
Seawater and freshwater.

## Material

No.	Part	Material
1	Body	Bronze CC491K (RG5)
2	Disc ring	NBR
3	Disc	Special brass CW710R (SoMs59)
4	Bonnet	Bronze CC491K (RG5)
5	Gasket	NBR bonded aramid
6	Stem	Special brass CW710R (SoMs59)
7	Handwheel	Cast iron EN-JL1040 (GG25)

## Max. working pressure (bar) at °C

DN	Connection	up to 80°C
40 - 65	PN 16	16



### Items

DN	Item no.	Pressure rating	Connection	D	D1 (BSP)	L1	L2	H	M	Weight (kg)	Color
40	80270	PN 16	PN 16	150	G 1 1/2"	65	70	150	140	4.3	Unpainted
50	80271	PN 16	PN 16	165	G 2"	73	75	150	140	5.3	Unpainted
65	80272	PN 16	PN 16	185	G 2 1/2"	95	90	165	160	9.5	Unpainted

All measurements in mm. Weights are approximations.

