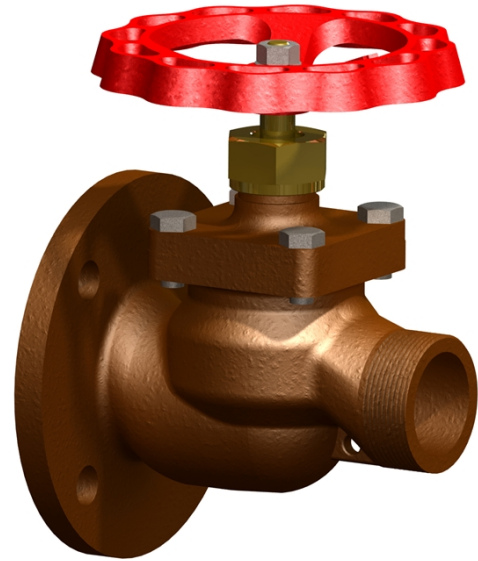


Description

Fire valve used in fresh water and sea water systems for multiturn operation, to be fitted with fire coupling for connecting fire hose. Straight type with bolted bonnet. Soft disc sealing.

Specifications

Flange standard:	EN 1092-3
Bonnet connection:	Bolted
Execution:	Straight
Connection type:	Flanged, Threaded male
Operation:	Handwheel
Actuation:	Multiturn



Application

For fire fighting systems. Max. temperature 80°C.

Media

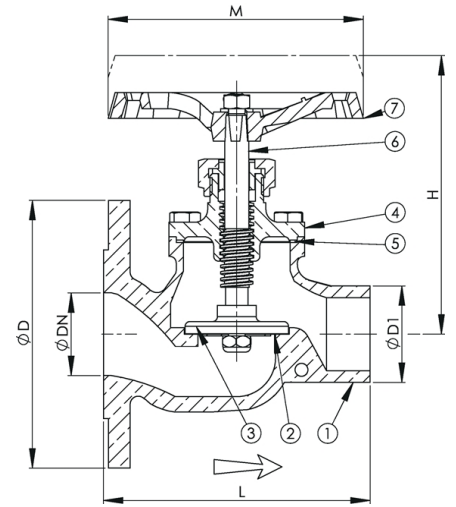
Seawater and freshwater.

Material

No.	Part	Material
1	Body	Bronze CC491K (RG5)
2	Disc ring	NBR
3	Disc	Special brass CW710R (SoMs59)
4	Bonnet	Bronze CC491K (RG5)
5	Gasket	NBR bonded aramid
6	Stem	Special brass CW710R (SoMs59)
7	Handwheel	Cast iron EN-JL1040 (GG25)

Max. working pressure (bar) at °C

DN	Connection	up to 80°C
40 - 65	PN 16	16



Items

DN	Item no.	Pressure rating	Connection	L	D	D1	H	M	Weight (kg)	Color
40	80266	PN 16	PN 16	150	150	G 1 1/2"	160	140	5.0	Unpainted
50	80267	PN 16	PN 16	167	165	G 2"	175	140	6.0	Unpainted
65	80269	PN 16	PN 16	200	185	G 2 1/2"	205	160	11.0	Unpainted

All measurements in mm. Weights are approximations.

