



Fire valve 356622

DESCRIPTION

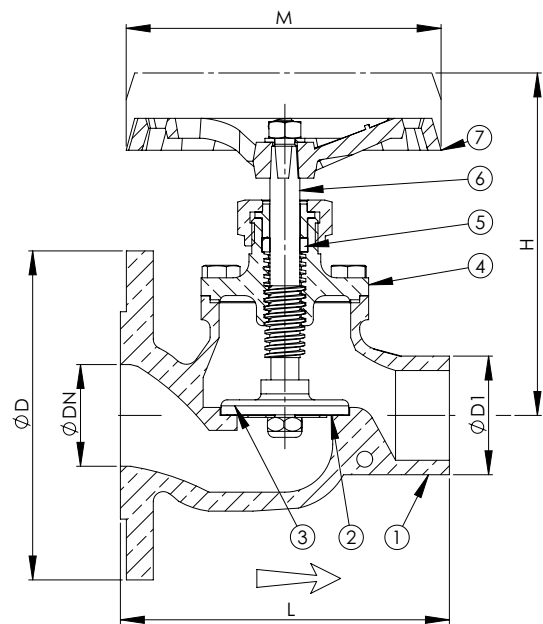
Straight type with bolted bonnet. Soft disc sealing.

APPLICATION

Water. Max. temperature 80°C.

No.	Part	Material
1	Body	Bronze CC491K (RG5)
2	Disc ring	NBR
3	Disc	Special brass CW710R (SoMs59)
4	Bonnet	Bronze CC491K (RG5)
5	Gasket	NBR bonded aramide
6	Stem	Special brass CW710R (SoMs59)
7	Handwheel	Cast iron EN-JL1040 (GG25)

DN	Max. working pressure (bar)
	Up to 80°C
40-65	16



DN	Connection	Pressure rating	L	D	D1	H	M	Kg
40	PN 16	PN 16	150	150	G 1 1/2"	160	140	5
50	PN 16	PN 16	167	150	G 2"	175	140	6
50	PN 16	PN 16	167	165	G 2"	175	140	6,5
50	PN 16	PN 16	167	185	G 2"	175	140	7
65	PN 16	PN 16	200	185	G 2 1/2"	205	160	11

All measurements in mm. Flanges according to EN 1092-3. Weights are approximations.



Fire valve 356722

DESCRIPTION

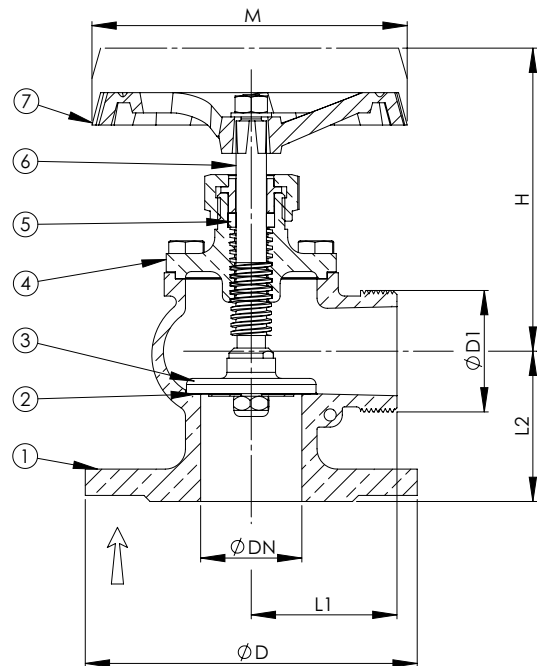
Angle type with bolted bonnet. Soft disc sealing.

APPLICATION

Water. Max. temperature 80°C.

No.	Part	Material
1	Body	Bronze CC491K (RG5)
2	Disc ring	NBR
3	Disc	Special brass CW710R (SoMs59)
4	Bonnet	Bronze CC491K (RG5)
5	Gasket	NBR bonded aramide
6	Stem	Special brass CW710R (SoMs59)
7	Handwheel	Cast iron EN-JL1040 (GG25)

DN	Max. working pressure (bar)
	Up to 80°C
40-65	16



DN	Connection	Pressure rating	L1	L2	D	D1 (BSP)	H	M	Kg
40	PN 16	PN 16	65	70	150	G 1 1/2"	150	140	4,3
50	PN 16	PN 16	73	75	150	G 2"	150	140	4,8
50	PN 16	PN 16	73	75	165	G 2"	150	140	5,3
50	PN 16	PN 16	73	75	185	G 2"	150	140	5,8
65	PN 16	PN 16	95	90	185	G 2 1/2"	165	160	9,5

All measurements in mm. Flanges according to EN 1092-3. Weights are approximations.