



Globe valve 467052

DESCRIPTION

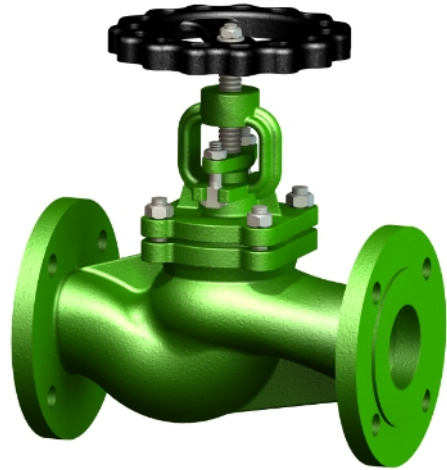
Face to face dimensions according to EN 558, series 1.
Flanges according to PN 16, drilled (DN 200-500 PN 10).

APPLICATION

Liquids, steam and gases that do not attack the integral material.

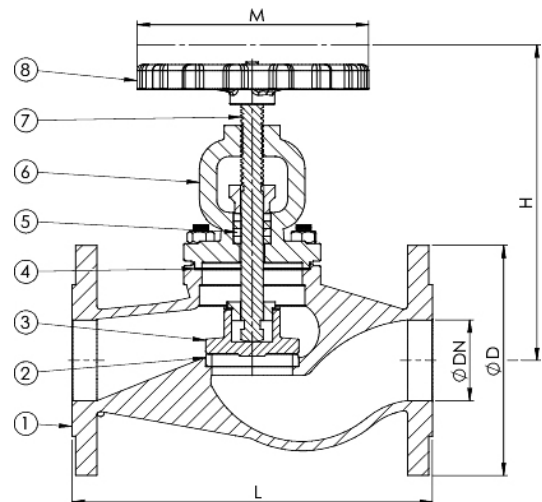
VARIANTS

SDNR disc, regulating disc, stainless steel trim.



No.	Part	Material
1	Body	Cast iron EN-JL1040 (GG25)
2	Seat	Bronze CC491K (RG5)
3	Disc	(DN15-65) Bronze CC491K (RG5) (DN80-200) Cast iron EN-JL1040 (GG25)
4	Gasket	Graphite
5	Gland packing	Graphite
6	Bonnet	Cast iron EN-JL1040 (GG25)
7	Stem	Special brass CW710R (SoMs59)
8	Handwheel	Cast iron EN-JL1040 (GG25)

DN	Max. working pressure (bar)	
	up to 120°C	180°C
15-150	16	10
200-250	10	6



DN	Connection	Pressure rating	L	D	H	M	Kg
15	PN 16	PN 16	130	95	177	120	3,5
20	PN 16	PN 16	150	105	179	120	4
25	PN 16	PN 16	160	115	198	120	5
32	PN 16	PN 16	180	140	198	120	6,8
40	PN 16	PN 16	200	150	221	140	9,3
50	PN 16	PN 16	230	165	224	140	12
65	PN 16	PN 16	290	185	267	140	18
80	PN 16	PN 16	310	200	292	160	25
100	PN 16	PN 16	350	220	325	160	35
125	PN 16	PN 16	400	250	370	200	55
150	PN 16	PN 16	480	285	420	200	77
200	PN 10	PN 10	600	340	643	400	145
250	PN 10	PN 10	730	395	780	400	243

All measurements in mm. Flanges according to EN 1092-2. Weights are approximations.