



Ball valve 443024

DESCRIPTION

Valve with female threaded ends.
Full bore.

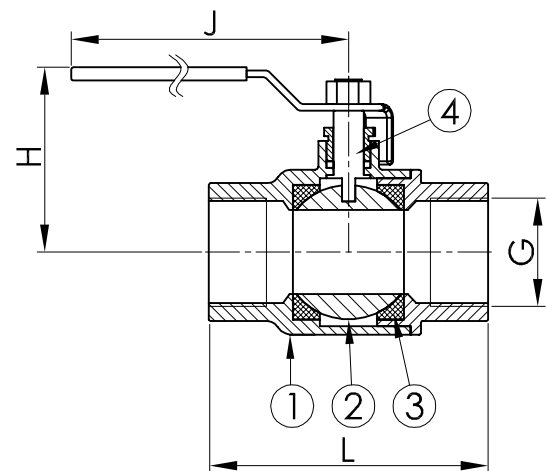
APPLICATION

Liquids, steam and gases that do not attack the integral material.



No.	Part	Material
1	Body	Bronze CC491K (RG5)
2	Ball	Brass CW617N (Ms 58) chrome-plated
3	Seat ring	PTFE
4	Stem	Brass CW614N (Ms 58)

DN	Max. working pressure (bar)
	Up to 120°C
8-100	32



DN	G (BSP)	Pressure rating	L	H	J	Kg
8	G 1/4"	PN 32	51	47,5	85	0,2
10	G 3/8"	PN 32	51	47,5	85	0,2
15	G 1/2"	PN 32	62	45	85	0,3
20	G 3/4"	PN 32	70	57,5	104	0,4
25	G 1"	PN 32	85	57,5	104	0,6
32	G 1 1/4"	PN 32	99	75	122	1
40	G 1 1/2"	PN 32	110	77,5	122	1,3
50	G 2"	PN 32	134	93	153	2,4
65	G 2 1/2"	PN 32	142	119,5	200	3,5
80	G 3"	PN 32	178	134	280	6
100	G 4"	PN 32	210	153,5	280	9

All measurements in mm. Weights are approximations.