



# Swing check valve, flanged connection

## 305852

### Description

Flanged swing check valve with low resistance and tight closing at low pressure. For horizontal and vertical (upwards flow) installation.

### Specifications

Execution: Straight

Connection type: Flanged

### Media

Steam. Fuel oil, lubricating oil and flammable hydraulic oil. Cargo oil.  
Air. Gas. Seawater and freshwater.

### Variants

O-ring material FPM/FKM (-30°C to +180°C) or PTFE (-50°C to +220°C).

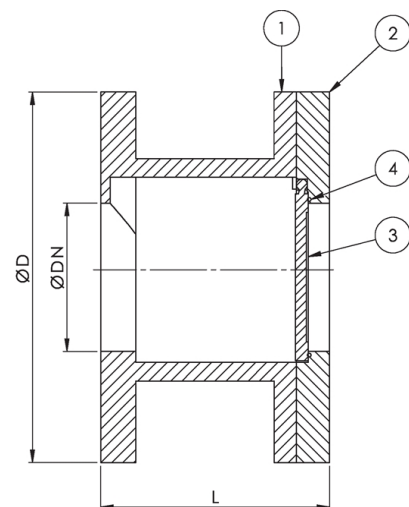


### Material

No.	Part	Material
1	Body	Cast iron EN-JL1040 (GG25)
2	Body	Cast iron EN-JL1040 (GG25)
3	Clapper	Stainless steel 1.4301 (AISI304)
4	O-ring	NBR

### Max. working pressure (bar) at °C

DN	Connection	-40°C to +95°C
15 - 150	PN 16	16
200 - 300	PN 10	10



## Items

DN	Pressure rating	Connection	L	D	Weight (kg)	Item no.
15	PN 16	PN 16	65	95	2.1	92518
20	PN 16	PN 16	65	105	2.5	92519
25	PN 16	PN 16	70	115	3.0	91645
32	PN 16	PN 16	75	140	5.0	91935
40	PN 16	PN 16	80	150	6.0	80005
50	PN 16	PN 16	85	165	7.0	80006
65	PN 16	PN 16	105	185	9.0	80841
80	PN 16	PN 16	125	200	11.0	81379
100	PN 16	PN 16	145	220	16.0	81139
125	PN 16	PN 16	170	250	21.0	80493
150	PN 16	PN 16	200	285	29.0	80842
200	PN 10	PN 10	255	340	44.0	81981
250	PN 10	PN 10	310	395	64.0	92437
300	PN 10	PN 10	360	445	79.0	41065

All measurements in mm. Weights are approximations.