



# Swing check valve 305072

## DESCRIPTION

For installation between flanges according to PN 16 (DN 250-500 PN 10).

## APPLICATION

Liquids, steam and gases that do not attack the integral material.

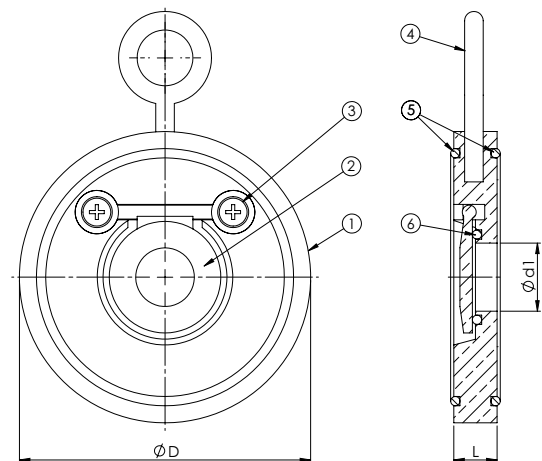
## VARIANTS

Other o-ring materials on request: FKM, PTFE, EPDM.

No.	Part	Material
1	Body	Aluminiumbronze CC333G (AB2)
2	Disc	Aluminiumbronze CC333G (AB2)
3	Bolt	Stainless steel 1.4436 (AISI 316)
4	Eyebolt	8.8 FZB
5	O-ring	See Temperature range
6	O-ring	See Temperature range

Temperature range	
NBR	-40°C up to +95°C
EPDM	-30°C up to +140°C
PTFE/FKM	-50°C up to +180°C

DN	Max. working pressure (bar)
	Up to 80°C
50-200	16
250-500	10



DN	Pressure rating	Connection	L	D	d1	Kg
50	PN 16	PN 16	14	109	33	0,9
65	PN 16	PN 16	14	129	41	1,2
80	PN 16	PN 16	14	144	54	1,5
100	PN 16	PN 16	18	164	71	2,5
125	PN 16	PN 16	18	194	92	3,3
150	PN 16	PN 16	20	220	112	4,7
200	PN 16	PN 16	22	275	155	7,8
250	PN 10	PN 10	26	330	201	13
300	PN 10	PN 10	32	380	240	19
350	PN 10	PN 10	38	440	270	34
400	PN 10	PN 10	44	493	311	46
450	PN 10	PN 10	50	543	361	63
500	PN 10	PN 10	56	598	405	88

All measurements in mm. Weights are approximations.

Revision 1