



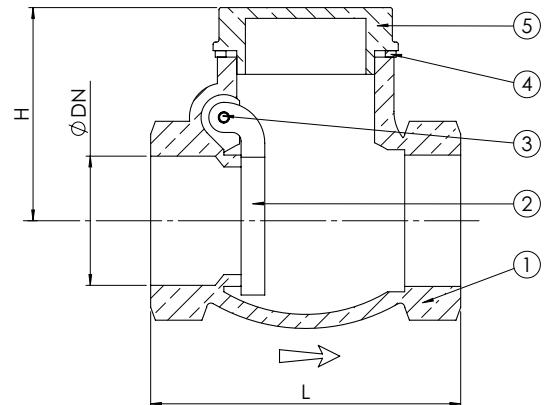
Swing check valve 304422

APPLICATION

Liquids that do not attack the integral material.
Also for installation in vertical pipelines.

| No. | Part | Material |
|-----|--------|---|
| 1 | Body | Bronze CC491K (RG5) |
| 2 | Disc | Brass CW617N (Ms 58) |
| 3 | Shaft | Brass CW614N (Ms 58) |
| 4 | Gasket | (DN 10-DN 25) NBR (DN 32-DN 100) PTFE |
| 5 | Cap | (DN 10-DN 15) Brass CW614N (Ms 58) (DN 20-DN 100) Brass CW617N (Ms 58) |

| DN | Max. working pressure (bar) |
|--------|-----------------------------|
| | Up to 95°C |
| 10-100 | 16 |



| DN | Connection (BSP) | Pressure rating | L | H | Kg |
|-----|------------------|-----------------|-----|-----|-----|
| 10 | G 3/8" | PN 16 | 49 | 31 | 0,2 |
| 15 | G 1/2" | PN 16 | 55 | 36 | 0,2 |
| 20 | G 3/4" | PN 16 | 62 | 43 | 0,3 |
| 25 | G 1" | PN 16 | 72 | 49 | 0,5 |
| 32 | G 1 1/4" | PN 16 | 82 | 57 | 0,7 |
| 40 | G 1 1/2" | PN 16 | 90 | 63 | 0,8 |
| 50 | G 2" | PN 16 | 105 | 69 | 1,3 |
| 65 | G 2 1/2" | PN 16 | 125 | 82 | 2 |
| 80 | G 3" | PN 16 | 144 | 91 | 3 |
| 100 | G 4" | PN 16 | 176 | 123 | 5 |

All measurements in mm. Weights are approximations.